

30 January 2019

Early results from 30,000m drill program strengthen bulk mining potential at King of the Hills

Assays return wide zones of gold mineralisation including an exceptional intercept of 312m grading 2.01g/t Au; understanding of Eastern Margin Contact damage zone extended

- Assays received from ongoing 30,000m diamond drill program designed to advance the bulk mining opportunity along the Eastern Margin Contact Zone at the King of the Hills (KOTH) gold mine in WA.
- Significant new composite intercepts within the current 1.88Moz Resource envelope, but not included within the reported Resource model, include:
 - 312m @ 2.01g/t Au including 11.3m @ 2.5g/t Au from 3.3m and 13.2m @ 22.4g/t Au from 236m (KHRD0166)
 - 313.7m @ 1.24g/t Au including 15.4m @ 13.3g/t Au from 268m (KHRD0170)
 - 222m @ 1.28g/t Au including 9.2m @ 7.43g/t Au from 50.1m (KHRD0171)
 - 203m @ 1.12g/t Au including 39.5m @ 2.7g/t Au from 64m (KHRD0172)
 - 171m @ 1.23g/t Au including 22.7m @ 2.6g/t Au from 36m and 1.1m @ 57.5g/t Au from 81.9m (KHRD0168)
 - 71.2m @ 1.22g/t Au (KHRD0143)
 - 88.9m @ 1.07g/t Au (KHRD0146)
- Significant new composite intercepts (included within the reported Resource model), include¹:
 - 116m @ 1.55g/t Au including 18m @ 7.6g/t Au from 22m (KHRD0116)
 - 47.8m @ 2.1g/t Au (KHRD0141)

¹ Previously reported in 4 December 2018 announcement in Table 1 as significant intercepts > 1.0 Au g/t

- The results strengthen the emerging bulk mining potential at KOTH, confirming the Company's exploration model for the granodiorite contact zone which is based on a large network of narrow high-grade veins as well as broader zones of stockwork mineralisation which collectively can be bulked out into broad mineralised zones.
- The new drilling information, together with results from the ongoing program of assaying historical drill core, has the potential to enhance the tonnage, grade and classification of the Resource.

Red 5 Limited ("Red 5" or "the Company") (ASX: RED) is pleased to report early assay results from the 30,000m underground diamond drill program being undertaken as part of the ongoing review of the emerging bulk mining potential at the King of the Hills (KOTH) gold mine, located in the Eastern Goldfields region of Western Australia.

Red 5 Limited

ABN 73 068 647 610

ASX: RED

Shares on issue: 1,243M

Level 2, 35 Ventnor Avenue West Perth 6005 Western Australia Tel: (+61) 8 9322 4455 Fax: (+61) 8 9481 5950

Web: www.red5limited.com

Investor enquiries: info@red5limited.com

The encouraging early results, which include numerous thick composite intercepts of significant gold mineralisation, provide further impetus to the bulk mining strategy at KOTH and, together with the assay results reported in December 2018 from assaying of previously unassayed historical drill core (refer ASX announcement dated 19 December 2018), are expected to contribute towards future increases in the Resource at KOTH.

30,000m DIAMOND DRILL PROGRAM – EARLY RESULTS

Red 5 commenced an underground drilling program to further evaluate the 1.88Moz bulk Resource at KOTH in October 2018. The program, comprising some 30,000m of drilling, has made good progress to date.

The holes drilled so far have been targeting the northern and central areas of the northern part of the Eastern Margin Contact Zone, as well as an area located within the more central part of the granodiorite.

The overall program is expected to be completed in the June 2019 quarter.

The results received to date are considered important, as they corroborate the Company's geological model for the Eastern Margin Contact Zone and within the granodiorite, which is based on a large network of narrow high-grade veins as well as broader zones of stockwork mineralisation and high-grade veins up to 1.5m wide, as demonstrated by hole KHRD0116, which can be bulked out into broad mineralised zones.

Significant intercepts delivered from the program to date include:

- ***312m @ 2.01g/t Au including 11.3m @ 2.5g/t Au from 3.3m and 13.2m @ 22.4g/t Au from 236m (KHRD0166)***
- ***116m @ 1.55g/t Au including 18m @ 7.6g/t Au from 22m (KHRD0116)***
- ***313.7m @ 1.24g/t Au including 15.4m @ 13.3g/t Au from 268m (KHRD0170)***
- ***222m @ 1.28g/t Au including 9.2m @ 7.43g/t Au from 50.1m (KHRD0171)***
- ***203m @ 1.12g/t Au including 39.5m @ 2.7g/t Au from 64m (KHRD0172)***
- ***171m @ 1.23g/t Au including 22.7m @ 2.6g/t Au from 36m and 1.1m @ 57.5g/t Au from 81.9m (KHRD0168)***
- ***47.8m @ 2.1g/t Au (KHRD0141)***
- ***71.2m @ 1.22g/t Au (KHRD0143)***
- ***88.9m @ 1.07g/t Au (KHRD0146)***

Notes: Refer to Appendix 1, Tables 1 and 2 below for summary information, drill-hole collar locations, orientations, significant assays (including individual high-grade assays), and reporting parameters used. Intercept lengths are reported as 'down-hole' lengths, not true widths.

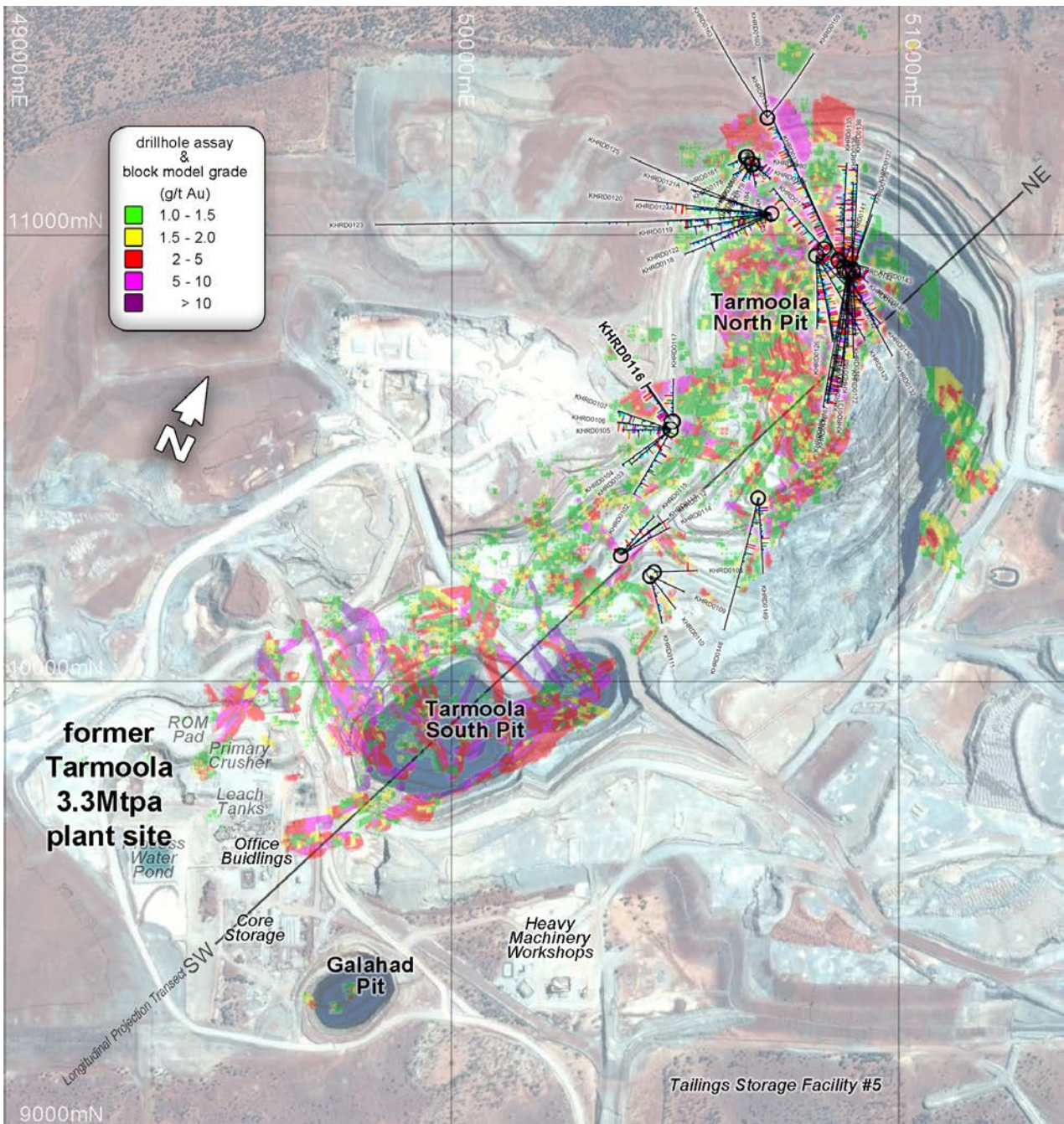


Figure 1. Plan view of King of the Hills Project, showing the projected location of the drill holes being reported on and the current resource block model.

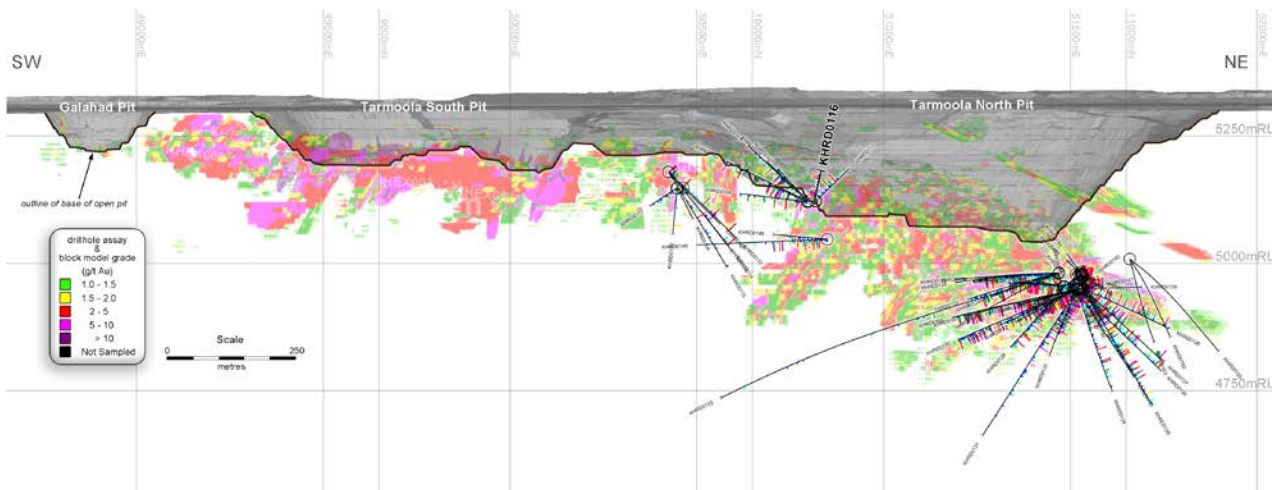


Figure 2. King of the Hills Longitudinal Projection, showing the block model for the current 1.88Moz Resource and the projected location of the drill holes being reported on.

Hole KHRD0116

Hole KHRD0116 grades 1.55g/t Au over its entire 116m length, including 18m @ 7.6g/t Au from 22m. It was drilled entirely within the granodiorite, approximately 400m grid west from the eastern contact margin. A high-grade intercept reported for KHRD0116 (1.18m @ 46/t Au from 31.4m) is associated with a 0.6m wide quartz vein, which contains zones of thin (< 1cm) sulphide-rich laminae with visible free gold.

This hole is located close to other drilling which has intersected broad but weak stockwork mineralisation. It is also located in the hanging-wall position, approximately 45 metres to the mine-grid south of the high-grade Baelor stope, 180 metres beneath the crest of the open pit and is 200 metres west in horizontal distance from the west wall of the open pit (figures 1 and 2).

This hole demonstrates the presence of potential vein sets that are sub-parallel to the Baelor vein in this area of the mine, and highlights how these mineralised zones might potentially bulk out as larger broad stockwork mineralised zones. It also confirms the increasing extent of the mineralised envelope to over 400 metres from the granodiorite-ultramafic contact, with the main intensity of the mineralisation focused along the eastern margin contact zone. This widening of the overall stockwork zones within the granodiorite and above the contact, within the ultramafic, mafic and sedimentary rock units, west of the near vertical eastern margin contact as shown in the grade block model of the initial bulk resource estimate released last December 2018.

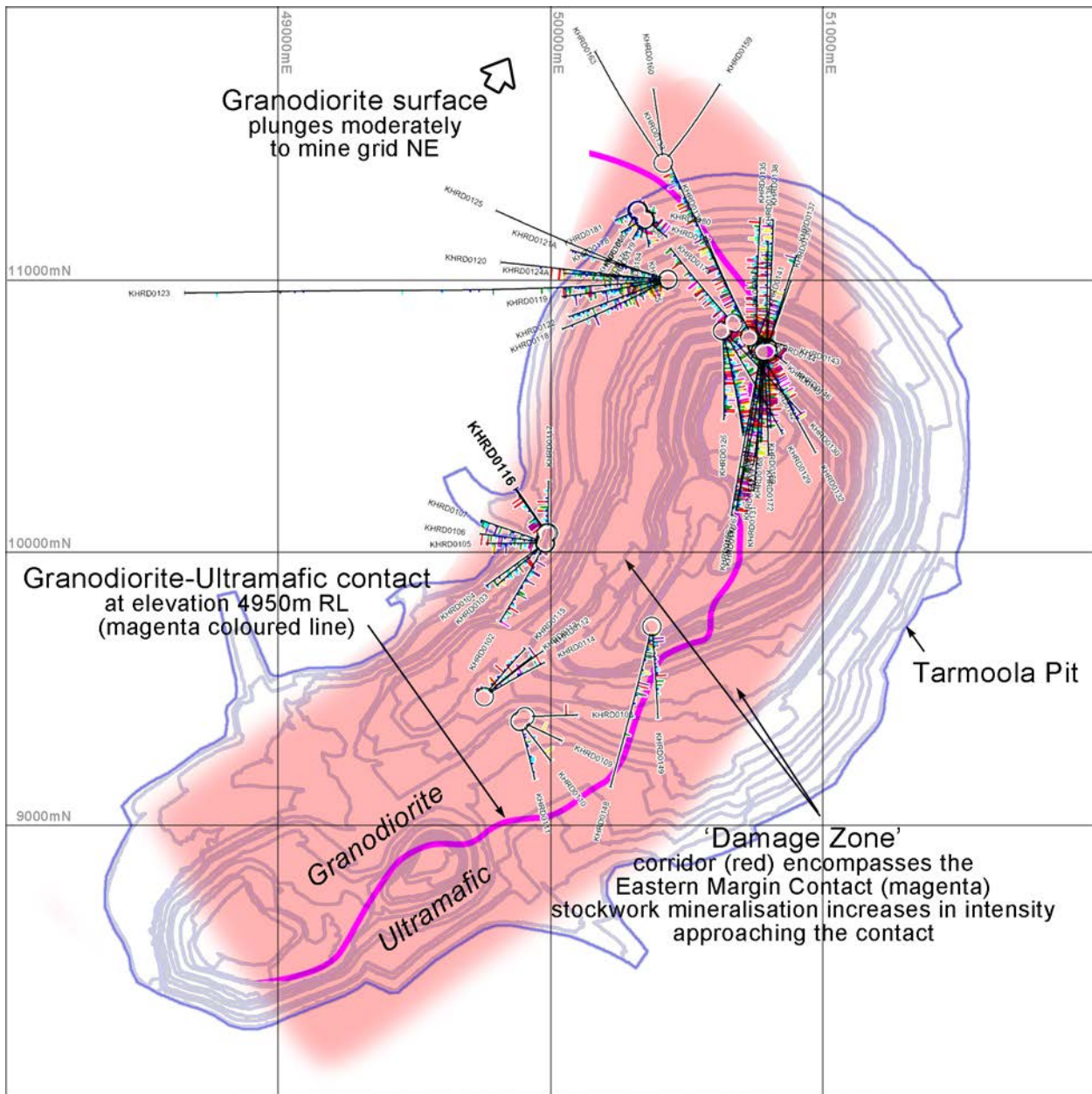


Figure 3. Schematic plan view of King of the Hills Gold Mine, showing the recent drill holes being reported on, in relation to the interpreted “damage zone”, where the development of the stockwork has so far been identified, encompassing the granodiorite-ultramafic contact.

As indicated by the results from drillhole KHRD0116, and the development of the initial bulk resource model has broadened the interpretation of the stockwork mineralisation as outlined in the figure above (Figure 3), It should be noted that to date, the highest intensity of the stockwork is generally developed within a 50 to 100m distance of the eastern contact margin, more particularly in places associated with shear-related contact mineralisation developed along the near-vertical eastern contact.

MANAGEMENT COMMENT

Red 5 Managing Director, Mark Williams, said the 30,000m drilling program at King of the Hills was making solid progress and delivering some exceptional results early in the program, including some of the most impressive broad zones of gold mineralisation ever reported at the mine.

“Our underground drilling program is off to a strong start with these highly encouraging intercepts. We have a growing level of confidence in the potential to upgrade and expand the existing 1.88Moz bulk mineral resource,” he said.

“These drilling results, together with the results being generated from the program of assaying un-assayed historical drill core, are expected to contribute towards future increases in the KOTH bulk mining Resource.

ENDS

For more information:

Investors/Shareholders:

Mark Williams, Managing Director
John Tasovac, Chief Financial Officer
Red 5 Limited
Telephone: +61 8 9322 4455

Media:

Nicholas Read
Read Corporate
Tel: +61-8 9388 1474

Exploration Results

Mr Byron Dumpleton, confirms that he is the Competent Person for the Exploration Results summarised in this report and Mr Dumpleton has read and understood the requirements of the 2012 Edition of the Australasian Code for Reporting of Exploration Results, Mineral Resources and Ore Reserves (JORC Code, 2012 Edition). Mr Dumpleton is a Competent Person as defined by the JORC Code, 2012 Edition, having five years' experience that is relevant to the style of mineralisation and type of deposit described in this report and to the activity for which he is accepting responsibility. Mr Dumpleton is a Member of the Australian Institute of Geoscientists, No. 1598. Mr Dumpleton is a full time employee of Red 5 Limited. Mr Dumpleton has reviewed this report and consents to the inclusion of the matters based on his supporting information in the form and context in which it appears.

The information in this report that relates to the Mineral Resources for the Eastern Margin Contact at the King of the Hills gold mine is extracted from the report titled “Initial 1.9Moz Resource for Eastern Margin Contact at King of the Hills Triggers Strategic Review of Bulk Mining Options”, dated 4 December 2018, which is available on the ASX website. Red 5 confirms that it is not aware of any new information or data that materially affects the information included in the original market announcement and that all material assumptions and technical parameters underpinning the estimates in the relevant market announcement continue to apply and have not materially changed. The Company confirms that the form and context in which the Competent Persons findings are presented have not been materially modified from the original market announcement.

Forward-Looking Statements

Certain statements made during or in connection with this statement contain or comprise certain forward-looking statements regarding Red 5's Mineral Resources and Reserves, exploration operations, project development operations, production rates, life of mine, projected cash flow, capital expenditure, operating costs and other economic performance and financial condition as well as general market outlook. Although Red 5 believes that the expectations reflected in such forward-looking statements are reasonable, such expectations are only predictions and are subject to inherent risks and uncertainties which could cause actual values, results, performance or achievements to differ materially from those expressed, implied or projected in any forward looking statements and no assurance can be given that such expectations will prove to have been correct. Accordingly, results could differ materially from those set out in the forward-looking statements as a result of, among other factors, changes in economic and market conditions, delays or changes in project development, success of business and operating initiatives, changes in the regulatory environment and other government actions, fluctuations in metals prices and exchange rates and business and operational risk management. Except for statutory liability which cannot be excluded, each of Red 5, its officers, employees and advisors expressly disclaim any responsibility for the accuracy or completeness of the material contained in this statement and excludes all liability whatsoever (including in negligence) for any loss or damage which may be suffered by any person as a consequence of any information in this statement or any error or omission. Red 5 undertakes no obligation to update publicly or release any revisions to these forward-looking statements to reflect events or circumstances after today's date or to reflect the occurrence of unanticipated events other than required by the Corporations Act and ASX Listing Rules. Accordingly you should not place undue reliance on any forward looking statement.

APPENDIX 1

King of The Hills (KOTH) Gold Mine Significant Assays from Recently Commenced 30,000m Underground Drilling Program

Table 1: Significant intercepts received since last reporting of underground drilling in 2018 include:

Drill hole ID	East	North	RL	Depth	Azim	Dip	From	Length	Grade g/t Au
KHRD0102 *	50488.0	10563.7	5121.9	185.0	208.0	25.7	62.39	6.56	3.94
						<i>includes</i>	62.39	0.32	30.80
						<i>includes</i>	63.40	0.20	10.20
						<i>includes</i>	64.93	0.20	54.50
						<i>includes</i>	117.01	1.69	8.55
						<i>includes</i>	117.01	0.25	54.50
KHRD0105 *	50488.0	10563.7	5122.2	134.9	270.2	36.5	113.07	7.19	1.29
KHRD0106 *	50487.0	10564.7	5121.5	125.1	278.2	16.7	81.26	6.40	2.16
						<i>includes</i>	82.20	0.40	12.60
						<i>includes</i>	82.60	0.20	11.30
						<i>includes</i>	86.80	0.25	12.75
KHRD0107 *	50486.5	10565.0	5122.0	139.2	290.0	28.2	26.55	1.34	9.04
						<i>includes</i>	26.80	0.40	28.00
						<i>includes</i>	101.70	1.84	8.39
						<i>includes</i>	102.50	1.04	14.55
						<i>includes</i>	120.75	0.25	103.50
KHRD0116 *	50489.7	10582.5	5122.6	116.0	323.1	31.8	22.00	18.00	7.60
						<i>includes</i>	23.90	0.44	51.10
						<i>includes</i>	24.64	0.81	19.85
						<i>includes</i>	25.45	0.80	23.60
						<i>includes</i>	29.00	0.56	15.85
						<i>includes</i>	31.42	0.58	36.20
						<i>includes</i>	32.00	0.60	55.60
						<i>includes</i>	83.00	2.00	9.15
						<i>includes</i>	83.00	1.00	14.95
KHRD0118 *	50713.1	11047.6	4980.7	215.1	242.4	-1.8	24.44	7.56	1.22
						<i>includes</i>	68.40	6.70	2.54
						<i>includes</i>	69.14	0.62	17.40
						<i>includes</i>	145.73	5.36	2.30
						<i>includes</i>	149.10	1.00	11.40
KHRD0119	50713.0	11048.3	4981.8	197.9	258.0	-1.7	114.66	7.34	2.71
						<i>includes</i>	115.50	0.78	22.00
KHRD0122	50713.0	11048.3	4981.8	201.9	249.0	-13.4	101.86	8.26	2.99
						<i>includes</i>	109.04	0.32	58.50
KHRD0123 *	50712.9	11048.4	4980.7	922.0	262.8	-13.4	73.18	3.90	7.68
						<i>includes</i>	76.53	0.55	46.50
						<i>includes</i>	145.47	0.33	182.00
						<i>includes</i>	146.00	0.34	38.50
						<i>includes</i>	146.65	16.24	5.22
						<i>includes</i>	148.36	0.20	12.20
						<i>includes</i>	148.56	0.24	39.30
						<i>includes</i>	148.80	0.20	72.70
						<i>includes</i>	149.00	0.26	17.90
						<i>includes</i>	149.26	0.44	55.10
						<i>includes</i>	149.70	0.30	32.40
						<i>includes</i>	190.00	7.98	1.54
						<i>includes</i>	193.65	0.32	17.55
KHRD0126 *	50813.2	10954.1	4955.1	165.0	177.0	3.9	0.00	4.20	3.14
						<i>includes</i>	80.00	11.00	1.21

Drill hole ID	East	North	RL	Depth	Azim	Dip	From	Length	Grade g/t Au
KHRD0127 *	50813.2	10954.1	4955.1	190.6	167.0	4.2	0.00	13.71	2.59
							20.50	2.50	13.32
							<i>includes</i> 20.50	0.27	110.00
							131.91	9.09	2.04
KHRD0129 *	50814.2	10954.6	4954.4	220.0	149.0	2.9	43.88	0.82	18.68
							<i>includes</i> 44.50	0.20	75.40
KHRD0130 *	50814.2	10954.6	4954.4	210.0	135.2	3.0	77.80	26.14	3.15
							<i>includes</i> 90.46	0.22	17.25
							<i>includes</i> 93.04	0.32	10.25
							<i>includes</i> 102.00	1.00	37.80
							<i>includes</i> 108.00	6.75	1.75
						<i>includes</i> 111.41	0.36	13.50	
KHRD0131	50882.7	10917.6	4948.8	386.7	179.9	-46.0	35.61	7.30	2.54
							<i>includes</i> 36.54	0.21	57.50
							52.03	2.97	11.32
							<i>includes</i> 53.06	0.23	55.10
						<i>includes</i> 53.29	0.20	81.80	
KHRD0132	50882.7	10917.6	4948.8	250.0	151.8	-29.9	3.81	10.19	2.80
							<i>includes</i> 5.50	0.84	11.85
							<i>includes</i> 7.53	0.35	18.95
							20.54	18.31	3.26
							<i>includes</i> 21.00	1.00	20.40
							<i>includes</i> 26.27	0.26	30.50
							<i>includes</i> 36.00	0.30	16.55
							47.03	14.97	2.10
							<i>includes</i> 48.19	0.21	10.35
							<i>includes</i> 52.83	1.17	14.35
							<i>includes</i> 57.17	0.35	14.15
						67.00	7.20	1.27	
						<i>includes</i> 73.95	0.25	15.40	
KHRD0133	50876.7	10925.9	4948.3	410.9	332.2	-23.6	5.19	6.64	1.35
							68.69	7.31	4.52
							<i>includes</i> 68.69	0.31	12.65
							<i>includes</i> 69.00	0.49	51.30
							118.20	3.67	3.92
							<i>includes</i> 118.20	0.41	20.70
							<i>includes</i> 121.65	0.22	18.30
							174.59	0.89	48.89
							<i>includes</i> 174.92	0.56	76.90
							382.54	6.66	1.80
KHRD0134	50876.7	10925.9	4948.3	300.0	332.1	-40.9	9.00	4.38	5.20
							<i>includes</i> 10.70	0.20	58.50
							<i>includes</i> 10.90	0.85	10.30
							74.25	9.94	1.49
						<i>includes</i> 74.25	0.42	23.90	
KHRD0135	50876.7	10925.9	4948.3	285.0	359.0	-33.1	99.00	7.25	2.77
							<i>includes</i> 102.00	0.20	38.30
							<i>includes</i> 105.70	0.20	29.50
KHRD0136	50894.8	10922.2	4950.0	300.0	359.8	-48.3	0.00	12.00	1.36
							<i>includes</i> 0.45	0.22	20.70
							<i>includes</i> 6.90	0.23	21.50
							35.00	7.00	1.28
							60.44	6.56	1.32
							<i>includes</i> 62.70	0.41	12.80
							74.00	4.11	3.89
							<i>includes</i> 77.45	0.66	14.40
222.90	4.10	5.88							
<i>includes</i> 224.58	0.37	59.80							
KHRD0137 *	50895.0	10922.4	4950.0	227.0	18.0	-37.0	0.34	2.41	9.97
							<i>includes</i> 0.34	0.61	35.00
							6.60	4.95	3.59
							<i>includes</i> 11.06	0.49	24.90

Drill hole ID	East	North	RL	Depth	Azim	Dip	From	Length	Grade g/t Au
							29.60	3.19	4.45
						<i>includes</i>	32.59	0.20	65.90
							78.60	7.80	1.88
						<i>includes</i>	78.60	0.34	12.50
						<i>includes</i>	78.94	0.20	17.70
						<i>includes</i>	86.20	0.20	23.50
							99.00	1.00	23.90
						<i>includes</i>	99.00	0.40	22.40
						<i>includes</i>	99.40	0.60	24.90
							128.85	0.50	28.32
						<i>includes</i>	128.85	0.30	46.00
KHRD0138	50894.8	10922.4	4950.1	248.5	4.3	-17.4	0.00	6.20	1.59
							16.50	9.17	3.89
						<i>includes</i>	21.90	0.26	33.50
							44.46	1.69	10.07
						<i>includes</i>	44.46	0.65	24.70
							69.40	1.03	12.45
							115.62	0.20	88.80
							178.31	0.70	28.74
						<i>includes</i>	178.31	0.24	83.00
KHRD0140 *	50875.8	10925.8	4950.6	50.0	359.0	28.1	24.60	14.90	1.76
						<i>includes</i>	28.07	0.26	21.70
KHRD0141 *	50876.1	10926.0	4949.6	47.8	18.0	9.8	23.50	10.67	7.37
						<i>includes</i>	26.66	0.20	12.10
						<i>includes</i>	29.28	0.23	220.00
						<i>includes</i>	32.55	0.46	20.40
							38.97	8.83	1.51
						<i>includes</i>	38.97	0.22	13.55
						<i>includes</i>	39.19	0.22	21.90
KHRD0143	50863.1	10945.2	4979.2	71.2	105.2	-9.7	1.60	42.40	2.01
						<i>includes</i>	11.11	0.21	14.20
						<i>includes</i>	13.41	0.64	38.60
KHRD0144	50863.4	10945.1	4978.3	35.1	109.9	-40.3	26.60	8.52	2.93
						<i>includes</i>	33.47	0.21	83.00
KHRD0145	50863.4	10944.6	4979.1	65.0	129.0	-4.0	12.07	5.43	3.16
						<i>includes</i>	13.62	0.60	19.60
KHRD0146	50863.7	10944.6	4978.5	88.9	126.1	-16.7	2.98	0.69	42.30
						<i>includes</i>	2.98	0.69	42.30
							7.78	15.74	2.08
						<i>includes</i>	18.73	0.97	10.95
							64.73	6.23	3.62
						<i>includes</i>	70.26	0.70	20.70
KHRD0148	50683.3	10410.7	5047.7	306.0	192.5	-1.3	53.40	3.69	19.20
						<i>includes</i>	53.40	0.25	277.00
							125.43	2.49	4.83
KHRD0149	50683.3	10410.7	5047.7	170.1	174.8	3.7	17.17	6.83	1.25
						<i>includes</i>	22.94	0.53	13.30
KHRD0150	50832.5	10968.1	4979.1	180.5	317.9	-4.3	0.00	8.00	1.25
							31.18	5.94	3.28
						<i>includes</i>	32.97	0.42	38.40
							79.06	8.00	2.26
						<i>includes</i>	81.66	0.34	19.10
						<i>includes</i>	85.88	0.21	17.70
							99.66	2.32	5.23
KHRD0166	50883.6	10916.6	4949.5	312.0	190.1	-9.5	3.28	11.29	2.49
						<i>includes</i>	3.28	0.22	66.50
						<i>includes</i>	6.50	0.40	12.10
							34.30	16.86	1.84
						<i>includes</i>	48.20	0.28	36.00
							77.45	7.72	2.29
						<i>includes</i>	83.80	0.25	15.85
							127.93	1.14	99.36

Drill hole ID	East	North	RL	Depth	Azim	Dip	From	Length	Grade g/t Au
						<i>includes</i>	128.84	0.23	186.00
							137.00	11.10	1.34
							156.01	2.19	7.52
						<i>includes</i>	156.01	0.25	42.00
						<i>includes</i>	157.80	0.20	12.15
							190.55	1.17	21.60
							236.05	13.15	22.38
						<i>includes</i>	237.40	0.79	12.60
						<i>includes</i>	242.06	0.45	54.20
						<i>includes</i>	243.32	0.60	74.80
						<i>includes</i>	246.00	0.56	20.50
						<i>includes</i>	246.56	0.27	406.00
						<i>includes</i>	246.83	0.59	55.50
							270.11	12.99	2.71
						<i>includes</i>	272.75	0.25	26.70
						<i>includes</i>	277.38	1.12	18.15
KHRD0167	50888.3	10916.2	4950.4	282.0	186.7	-9.5	0.00	2.24	15.66
						<i>includes</i>	0.00	0.28	26.30
						<i>includes</i>	1.14	1.10	24.50
							47.71	7.13	3.31
						<i>includes</i>	47.71	1.03	10.85
						<i>includes</i>	54.21	0.63	14.30
							77.13	7.60	1.86
						<i>includes</i>	82.30	0.45	21.80
							127.05	6.58	9.10
						<i>includes</i>	130.42	0.98	53.60
							249.95	1.86	10.33
						<i>includes</i>	249.95	0.75	24.30
							268.00	4.54	4.49
						<i>includes</i>	268.40	0.60	16.20
KHRD0168	50888.3	10916.2	4950.4	171.0	180.4	-9.9	1.58	0.32	143.50
							36.00	22.70	2.59
						<i>includes</i>	43.00	0.84	13.50
							81.90	1.10	57.45
						<i>includes</i>	81.90	0.20	314.00
							115.20	0.72	27.09
						<i>includes</i>	115.20	0.20	95.30
KHRD0169	50896.3	10914.8	4950.9	143.0	177.5	-9.6	45.00	3.00	4.87
						<i>includes</i>	47.23	0.21	57.20
KHRD0170	50883.7	10916.6	4949.5	313.7	187.9	-17.9	1.67	1.94	14.22
						<i>includes</i>	2.65	0.96	27.70
							88.67	3.13	7.70
						<i>includes</i>	91.13	0.29	54.10
						<i>includes</i>	91.42	0.38	22.20
							114.13	0.20	66.50
						<i>includes</i>	130.41	0.31	18.25
							229.00	6.38	1.44
							268.00	15.39	13.33
						<i>includes</i>	270.80	0.21	265.00
						<i>includes</i>	276.53	1.16	21.40
						<i>includes</i>	281.97	0.23	244.00
KHRD0171	50888.4	10916.1	4950.2	222.0	182.9	-17.8	50.11	9.19	7.43
						<i>includes</i>	50.11	0.20	96.50
						<i>includes</i>	52.61	1.20	10.20
						<i>includes</i>	53.81	1.20	18.10
							85.47	1.00	21.09
						<i>includes</i>	86.27	0.20	99.90
							94.78	3.42	27.37
						<i>includes</i>	96.54	0.56	53.10
						<i>includes</i>	97.10	1.10	56.50
							115.27	7.21	3.12
						<i>includes</i>	115.27	0.21	17.70

Drill hole ID	East	North	RL	Depth	Azim	Dip	From	Length	Grade g/t Au
						includes	116.50	0.20	18.85
						includes	119.68	0.55	17.40
							130.34	6.04	4.17
						includes	130.34	0.29	73.70
KHRD0172	50888.4	10916.1	4950.2	203.0	176.6	-17.4	0.00	2.50	9.01
						includes	0.00	0.41	30.00
							20.00	6.00	2.36
						includes	23.00	0.68	12.00
							54.00	2.20	6.56
						includes	55.48	0.20	62.40
							64.00	39.50	2.72
						includes	96.92	0.32	19.05
						includes	97.24	0.33	28.30
						includes	102.37	0.23	170.50
							120.00	5.18	4.84
						includes	124.27	0.37	27.60
						includes	124.64	0.26	41.40
							135.00	1.36	16.94
						includes	135.60	0.20	89.90
						includes	135.80	0.30	10.80

Reporting parameters:

* Single assays >1g/t Au have previously been reported in Table 2 appended to ASX announcement "Initial 1.9Moz Resource for Eastern Margin Contact at King of the Hills Triggers Strategic Review of Bulk Mining Options" dated 4 December 2017

¹ 0.3g/t Au low cut

² No high cut applied

³ Max 4m consecutive intervals of sub-grade (<0.3 g/t Au) material included

⁴ Minimum reporting width 6.0m with average grade ≥1.2 g/t Au, or minimum contained gold ≥12 gram*metres accumulation

⁵ Individual high grade (>10g/t Au) assay intervals reported separately

⁶ Collar coordinates, elevation and orientation given in Mine Grid

⁷ Intercept lengths are reported as 'down-hole' lengths, not true widths.

Table 2. Whole-Hole Average Grade for holes averaging >1.0 g/t Au:

Drillhole ID	East	North	RL	Depth	Azim	Dip	From	Length	Grade g/t Au
KHRD0116 *	50489.7	10582.5	5122.6	116.0	323.1	31.8	0.00	116.00	1.55
KHRD0141 *	50876.1	10926.0	4949.6	47.8	18.0	9.8	0.00	47.80	2.10
KHRD0143	50863.1	10945.2	4979.2	71.2	105.2	-9.7	0.00	71.20	1.22
KHRD0144	50863.4	10945.1	4978.3	35.1	109.9	-40.3	0.00	35.12	1.09
KHRD0146	50863.7	10944.6	4978.5	88.9	126.1	-16.7	0.00	88.90	1.07
KHRD0166	50883.6	10916.6	4949.5	312.0	190.1	-9.5	0.00	312.00	2.01
KHRD0168	50888.3	10916.2	4950.4	171.0	180.4	-9.9	0.00	171.00	1.23
KHRD0170	50883.7	10916.6	4949.5	313.7	187.9	-17.9	0.00	313.72	1.24
KHRD0171	50888.4	10916.1	4950.2	222.0	182.9	-17.8	0.00	222.00	1.28
KHRD0172	50888.4	10916.1	4950.2	203.0	176.6	-17.4	0.00	203.00	1.12

Reporting parameters:

* Single assays >1g/t Au have previously been reported in Table 2 appended to ASX announcement "Initial 1.9Moz Resource for Eastern Margin Contact at King of the Hills Triggers Strategic Review of Bulk Mining Options" dated 4 December 2017

¹ No high cut applied

² Collar coordinates, elevation and orientation given in Mine Grid

³ Intercept lengths are reported as 'down-hole' lengths, not true widths.